



Town of Fort Erie

**Bird-friendly
Design Standards**

APPENDIX “J”

Bird Friendly Design Standards

This appendix establishes bird-friendly design standards intended to reduce bird collisions into windows. The standards are intended for commercial, multi-residential, and institutional development in the Town of Fort Erie and for new single-detached dwellings in the Point Abino area that are subject to site plan control.

The bird-friendly design standards shall be applied up to 18.00 m or the height of the mature tree canopy. The standards may be applied above 18.00 m or the height of the mature tree canopy if development is located in a migratory path or under other special circumstances.

Site Plan Design – Landscaping and Flora

- Limit the height of landscaping immediately adjacent to large windowed areas to less than 1.5 m in height (low shrubs, flower beds, etc.).
- Avoid planting trees next to untreated windows over 2.0 sq. m in area.
- Avoid use of fruit-bearing plants or trees near windows.
- Avoid locating water features near large windowed areas (ponds, stormwater facilities, wetlands, ditches, swales, etc.).
- Plant adjacent low-level landscaping within 1.00 - 3.00 m of large window areas to reduce the impact of bird collisions.
- Encourage planting of larger landscaping vegetation (such as trees) along facades with few or no windows, or at least 30.00 m away from large glassed surfaces.

Example: Landscaping Reflected in Windows



Example: Bird-friendly Landscaping



Site Plan Design – Outdoor Light Sources

- Require renders of outdoor light fixtures to demonstrate how light will be effectively shielded and directed towards the ground.
- Avoid approval of fixtures that direct light upwards or do not feature adequate shielding.
- Where possible, discourage use of lighting for decorative purposes.

Bird-friendly Window Treatments

- Where possible, consider windows that are less than 2.0 sq m in area as they do not require window treatment.
- Window treatment should be implemented on all glass surfaces that have a contiguous area of 2.0 sq. m or greater from grade to 18.00 m in height or the height of the mature tree canopy.
- For glass surfaces on the first floor facing a street that are greater than 2.0 sq. m in area, limited glass areas without treatment are permitted for display purposes provided they do not exceed 2.0 sq. m in area.

Example: Gap in Window Treatment for Viewing and Display Purposes



For contiguous windows over 2.0 sq. m in area, one of the following bird-friendly window treatment options shall be implemented:

Vertical Stripe Patterning

Vertical stripes shall be spaced a maximum of 10.0 cm from midpoint to midpoint with stripe width being a minimum of 0.50 cm.



Horizontal Stripe Patterning

Horizontal stripes shall be spaced a maximum of 5 cm apart from midpoint to midpoint, with the stripe width being a minimum of 0.3 cm.



Dot Patterning

Dots shall be a minimum of 0.50 cm in diameter and spaced a maximum of 5.0 cm apart from midpoint to midpoint.



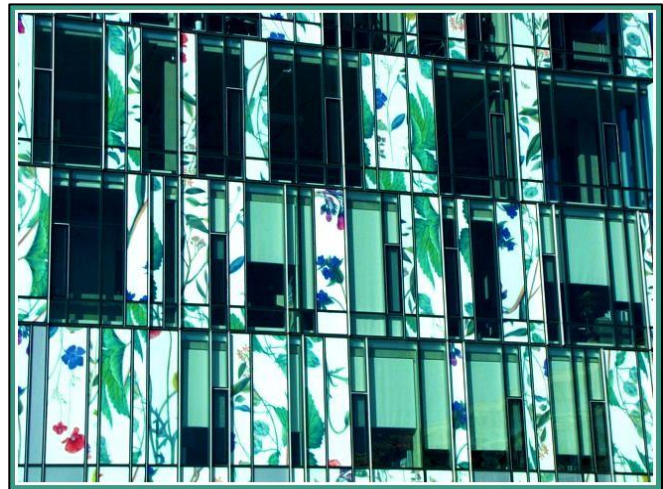
Aesthetic Patterns and Other Graphics

Aesthetic patterns or other graphics shall not have gaps in the treatment patterning larger than 5.0 cm.



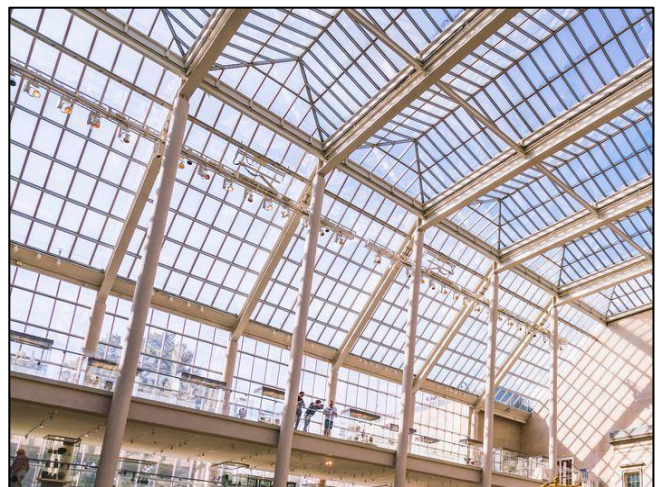
Tinting

Window tinting shall be non-reflective or opaque. Coloured glass with highly contrasting colours is to be encouraged where possible.



Mullions

Mullions shall be spaced a maximum of 0.30 m from midpoint to midpoint and with a minimum width of 2.5 cm.



Single Detached Dwellings in the Point Abino Area-Primary Measures (Window Treatment)

- Similar to larger-scale development, window treatment remains the primary and most effective bird-friendly design measure to reduce bird collisions with windows.
- Where possible, consider windows that are less than 2.0 sq m in area as they do not require window treatment.
- Window treatment should be applied on the external side of windows to be most effective.
- For contiguous windows over 2.0 sq m in area, one or more of the following bird-friendly window treatment options is recommended:

Stripe Patterning

Vertical stripes shall be spaced a maximum of 10.0 cm from midpoint to midpoint with stripe width being a minimum of 0.50 cm.
Horizontal stripes shall be spaced a maximum of 5 cm apart from midpoint to midpoint, with the stripe width being a minimum of 0.3 cm.



Dot Patterning

Dots shall be a minimum of 0.50 cm in diameter and spaced a maximum of 5.0 cm apart from midpoint to midpoint.



Non-reflective Tinting

Install window tinting that eliminates or greatly reduces reflections in large windows.



Single Detached Dwellings in the Point Abino Area – Secondary Measures

Generally, the preference for implementation of bird-friendly design standards shall be the use of primary measures (window treatment measures). Nevertheless, the following secondary measures may also be effective at reducing bird collisions:

Mullions

Windows may include mullions spaced a maximum of 0.30 m from midpoint to midpoint and with a minimum width of 1.0 cm.



External Coverings – Screens

Install movable/removable screens that can be placed in front of large window openings.



External Coverings – Non-retractable Awnings

Install non-retractable awnings that heavily obscure windows.

